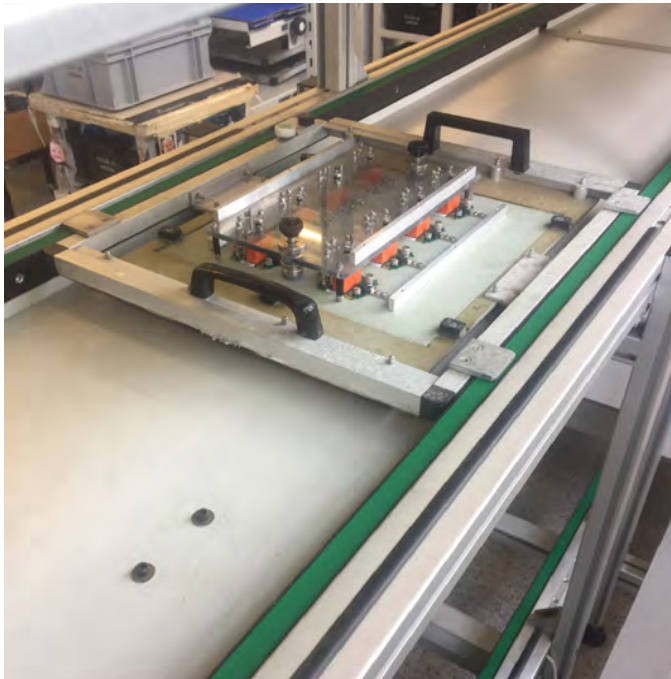


RAPPLON® Flat Belts Sales program 2021



RAPPLON® High Performance Flat Belts

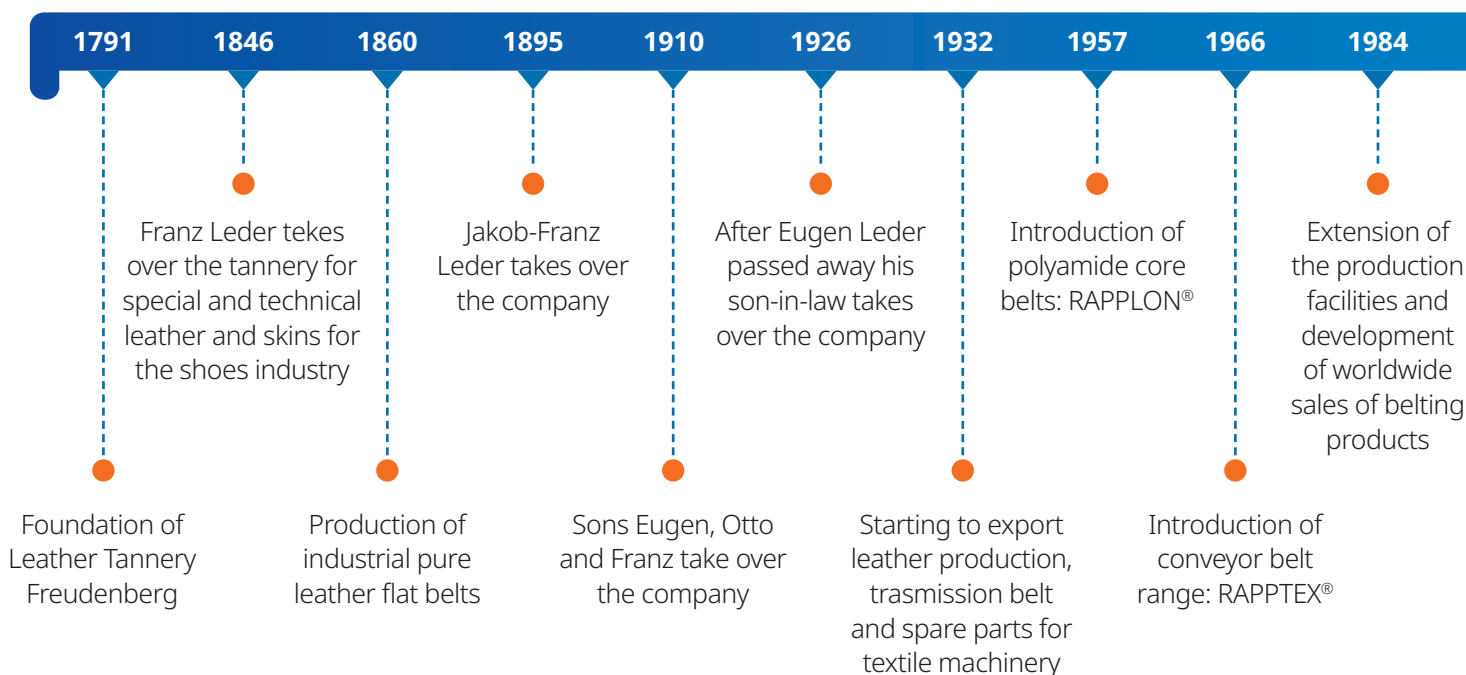
Accelerate to the most effective performance

Who we are

Ammeraal Beltech is a world leading manufacturer of process and conveyor belts for a diverse range of applications in nearly every major industry.

Our aim is to be the recognised leader everywhere we do business. To help achieve that goal, our international growth and expansion programme has brought some of the top brands in belting into our group.

Ammeraal Beltech offers a complete range of high quality flat belts made on state-of-the-art production equipment. This includes classical nylon core belting as well as modern belt constructions with thermo-plastic inner layers.



RAPPLON®  *Swiss made*

The production site is located in Rapperswil-Jona Switzerland where the manufacturing of RAPPLON® High Performance Flat Belts is our competence since the late 50s. In 1993 a new production plant was built to apply new technologies and set new quality standards, considering future market demands.

Continuous R&D efforts and the close collaboration with expert partners are resulting in innovative solutions to our customers. Our aim is to satisfy our customers with unique belting solutions and easy-to-use joining tools resulting in overall higher cost efficiency.

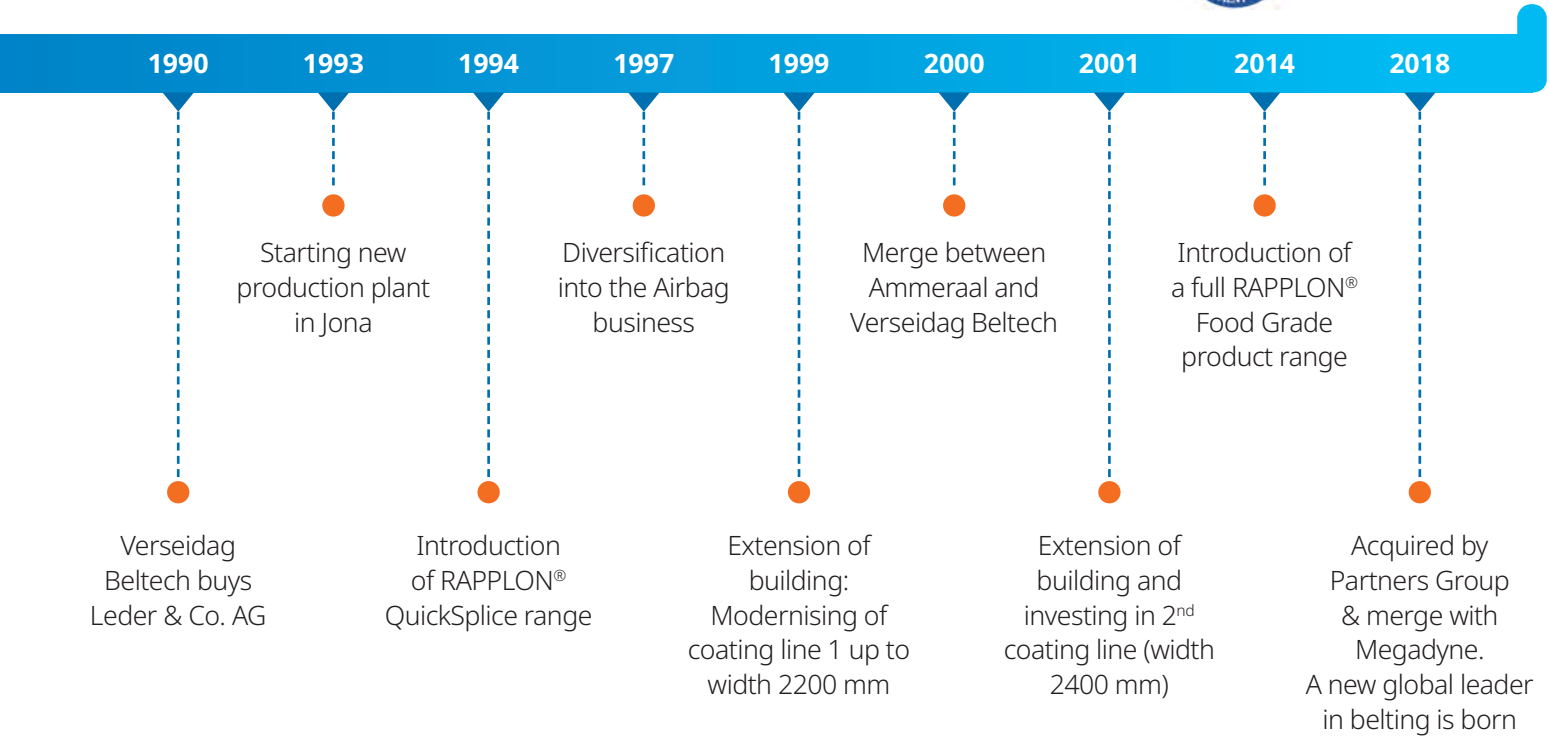
Ammeraal Beltech Switzerland is ISO certified since 1994. Our own quality management team in combination with regular audits make sure that all customer relevant processes are targeting for highest product and service quality.

Ammeraal Beltech maintains a leading position especially thanks to the customer-oriented acting of our highly motivated and flexible staff members.



Facts & Figures

Manufacturing area	2,800 m ²
Fabrication area	2,000 m ²
Total area	8,000 m ²
Employees	100
Quality system	ISO 9001:2015 ISO 14001:2015



Article Code & Nomenclature

The nomenclature explains in detail the structure of the article code system of Ammeraal Beltech for the product group RAPPLON® High Performance Flat Belts.

The nomenclature is always used in combination with the article code of the belt.

Article Code

Every product has its own unique article code of 10 characters:

- FB = Flat Belts
- XX = Cover material bottom / top (Note: Polyamide foil e.g. S 09 = SF)
- XXXXXX = Specific item number e.g. 054624

GG E10.40 RRQ FG	G	G	E	10	.40	R	R	Q	FG
GG N27 RFQ	G	G	N	2.7		R	F	Q	
GG N15 FFQ HC	G	G	N	1.5		F	F	Q	HC
GG S22 LRC	G	G	S	22		L	R	C	
TG E04.12 RQ	T	G	E	4	.12		R	Q	
TT S04.12 C	T	T	S	4	.12			C	
TG P07.60 RC	T	G	P	7	.60		R	C	
TT E09.18 Q	T	T	E	9	.18			Q	
UU N16 SP5Q FG	U	U	N	1.6		S	P5	Q	FG
UU N06 RFQ HG FG	U	U	N	0.6		R	F	Q	HG FG
Cover material bottom side (pulley side / running side)									
Cover material top side (back side / transport side)									
Material tensile member									
Tensile strength in N/mm at 1% elongation									
Tensile strength in 1/10 N/mm at 6% for non tensile members									
Total thickness in 1/10 mm									
Surface finish pulley side / running side (not mentioned for fabrics)									
Surface finish back side / transport side (not mentioned for fabrics)									
Splicing / Joining									
Additional remarks									

Tensile member materials

A	Aramid fabric
E	Polyester
N	Non specific tensile member
P	Polyamide fabric
S	Stretched polyamide foil

Cover materials

G	Rubber
L	Chrome Leather
P	Polyamide Foil
T	Fabric (Polyester, Polyamide or mixed)
U	Polyurethane
V	Fleece

Surface finish

F	Fine Structure
L	Longitudinal grooves
P5	Structure type
P6	Grip face
R	Rough / coarse
S	Smooth

Additional remarks

AX	ATEX-approved
FG	Food Grade
HC	High conductive
HG	High grip

All RAPPLON® High Performance Flat Belts are antistatic. Therefore it is not specifically mentioned.

Tensile strength at elongation (K1% or K6%)

The force/elongation value mentioned is the dynamic force needed for 1% elongation in N/mm (6% elongation in 1/10 N/mm for non tensile member items) after running in according standard DIN EN ISO 21181.

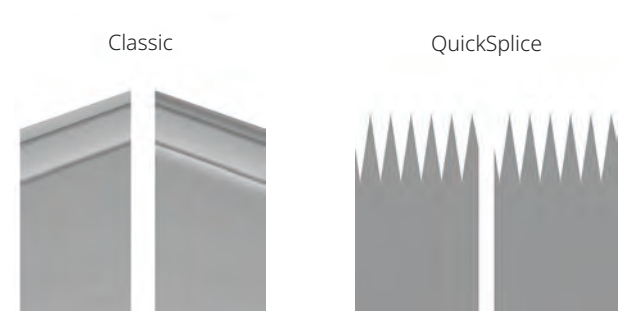
Total thickness

The total thickness of an item indicated in 1/10 mm is helpful for an easy belt selection in applications where thickness is an important requirement. We defined following applications: tangential belts in textile industry, roller drive belts, folder gluer belts, web folder tapes and tube winder belts. Thickness is not indicated on Power Transmission Belts as it has no influence and Elastic Belts as the thickness varies depending on elongation.

The exact belt thickness is measured according DIN EN ISO 2286-3 and can be found on every data sheet. Tolerances are defined for each item.

Splicing / Joining

C	ClassicSplice (skived and glued)
Q	QuickSplice (thermo-spliceable)



RAPPLON® QuickSplice Flat Belts

- Process belts
- Drive Belts, Tangential Drive Belts and Spindle tapes

Technical data RAPPLON® belts

Belt type	Art. No.	Belt Thickness (mm)		Belt Weight (kg/m ²)	Min. pulley diameter mm (20°C)	Belt factor at 1% elongation (N/mm)	Antistatic (AS)	Recommended elongation from/to (%)	Thermal application range (°C)	Cover bottom side (Material, colour, surface structure)	Cover top side (Material, colour, surface structure)	Tension member (Material)	Standard Range Central Stock
Process Belts													
GG E03.14 FFQ	54583	1.40	1.45	20	3.1	YES	0.5 - 2.0	+0 / +60	XNBR elastomer, Grey, Fine	XNBR elastomer, Grey, Fine	Polyester fabric	√	
GG E05.14 FFQ	54607	1.40	1.50	25	5.0	YES	0.5 - 2.0	+0 / +60	XNBR elastomer, Black, Fine	XNBR elastomer, Green, Fine	Polyester fabric	√	
GG E10.30 RRQ FG	54659	3.00	3.10	30	10.0	YES	0.4 - 0.6	+0 / +60	XNBR elastomer, Grey, Rough	XNBR elastomer, Grey, Rough	Polyester fabric	√	
GG E10.40 RRQ FG	54660	4.00	4.20	40	10.0	YES	0.4 - 0.6	+0 / +60	XNBR elastomer, Grey, Rough	XNBR elastomer, Grey, Rough	Polyester fabric	√	
GG E10.55 RRQ FG	54662	5.50	6.10	60	10.0	YES	0.4 - 0.6	+0 / +60	XNBR elastomer, Grey, Rough	XNBR elastomer, Grey, Rough	Polyester fabric	√	
GG P01.14 FFQ	54582	1.40	1.40	15	1.0	YES	0.5 - 2.0	+0 / +60	XNBR elastomer, Black, Rough	XNBR elastomer, Green, Fine	Polyamide fabric	√	
PG E05.12 SFQ	54630	1.20	1.20	20	5.0	YES	0.5 - 2.0	+0 / +60	Thermoplastic elastomer, Black, Smooth	XNBR elastomer, Green, Fine	Polyester fabric	√	
TG E04.12 RQ	54624	1.25	1.25	15	4.0	NO	0.5 - 2.0	+0 / +60	Polyester fabric, Green, Fabric texture	XNBR elastomer, Green, Rough	Polyester fabric	√	
TT E05.11 Q	54599	1.10	1.10	25	5.0	YES	0.5 - 2.0	+0 / +60	Polyester fabric, Black, Fabric texture	Polyester fabric, Grey, Fabric texture	Polyester fabric	√	
TT E09.18 Q	54598	1.90	1.90	25	9.0	YES	0.5 - 2.1	+0 / +60	Mixed fabric, Grey, Fabric texture	Mixed fabric, Grey, Fabric texture	Polyester fabric	√	
TT P02.12 Q	54647	1.20	1.00	10	2.0	YES	1.0 - 2.0	+0 / +60	Polyamide fabric, Black, Fabric texture	Polyamide fabric, Blue, Fabric texture	Polyamide fabric	√	
TU E04.09 RQ	54603	0.90	1.05	15	4.0	YES	0.5 - 2.0	+0 / +60	Polyester fabric, Green, Rough	Polyurethane, Black, Fabric texture	Polyester fabric	√	
UV E06.20 FQ	54559	2.00	2.10	20	6.0	YES	0.5 - 1.5	+0 / +60	Polyurethane, Royal blue, Fine	Fleece, Grey, Ground quality	Polyester fabric	√	

Technical data RAPPLON® belts

Belt type	Art. No.	Belt Thickness (mm)	Belt Weight (kg/m ²)	Min. pulley diameter mm (20°C)	Belt factor at 1% elongation (N/mm)	Antistatic (AS)	Recommended elongation from/to (%)	Thermal application range (°C)	Cover bottom side (Material, colour, surface structure)	Cover top side (Material, colour, surface structure)	Tension member (Material)	Standard Range Central Stock
Drive Belts, Tangential Drive Belts and Spindle Tape												
GG E08.20 RRQ	54614	2.00	2.00	25	8.0	YES	0.5 - 1.5	+0 / +60	XNBR elastomer, Black, Rough	XNBR elastomer, Blue, Rough	Polyester fabric	√
GG E15.20 RFQ	54655	2.00	2.10	25	15.0	YES	0.5 - 1.5	+0 / +60	XNBR elastomer, Grey, Rough	XNBR elastomer, Blue, Fine	Polyester fabric	√
GG E15.25 RFQ	54656	2.50	2.60	30	15.0	YES	0.5 - 1.5	+0 / +60	XNBR elastomer, Grey, Rough	XNBR elastomer, Blue, Fine	Polyester fabric	√
GG E15.30 RFQ	54657	3.00	3.30	40	15.0	YES	0.5 - 1.5	+0 / +60	XNBR elastomer, Grey, Rough	XNBR elastomer, Blue, Fine	Polyester fabric	√
GG E22.25 RFQ	54665	2.50	2.60	40	22.0	YES	0.5 - 1.5	+0 / +60	XNBR elastomer, Black, Rough	XNBR elastomer, Blue, Fine	Polyester fabric	√
GG E22.30 RFQ	54666	3.00	3.10	60	22.0	YES	0.5 - 1.5	+0 / +60	XNBR elastomer, Black, Rough	XNBR elastomer, Blue, Fine	Polyester fabric	√
GG E35.30 RRQ	54627	3.00	3.30	60	35.0	YES	0.5 - 1.5	+0 / +60	XNBR elastomer, Black, Rough	XNBR elastomer, Blue, Rough	Polyester fabric	√
UT E04.07 SQ	54970	0.70	0.70	10	4.0	YES	0.5 - 2.0	+0 / +60	Polyurethane, Black, Smooth	Mixed fabric, Blue, Fabric texture	Mixed fabric	√
UU A80.45 RRQ	54567	4.50	5.10	80	45.0	YES	0.3 - 1.0	+0 / +60	Polyurethane, Black, Rough	Polyurethane, black, Rough	Polyester fabric	√
UU E15.16 RFQ	54568	1.60	1.80	30	15.0	YES	0.5 - 1.5	+0 / +60	Polyurethane, Black, Rough	Polyurethane, Black, Fine	Polyester fabric	√
UU E15.20 RFQ	54765	2.00	2.20	30	15.0	YES	0.5 - 1.5	+0 / +60	Polyurethane, Black, Rough	Polyurethane, Black, Fine	Polyester fabric	√
UU E15.20 RFQ FG	54561	2.00	2.20	30	15.0	YES	0.5 - 1.5	+0 / +60	Polyurethane, Royal blue, Rough	Polyurethane, Royal blue, Fine	Polyester fabric	√
UU E15.30 RFQ	54762	3.00	3.50	30	15.0	YES	0.5 - 1.5	+0 / +60	Polyurethane, Black, Rough	Polyurethane, Black, Fine	Polyester fabric	√
UU E15.30 RFQ FG	54542	3.00	3.50	30	15.0	YES	0.5 - 1.5	+0 / +60	Polyurethane, Royal blue, Rough	Polyurethane, Royal blue, Fine	Polyester fabric	√
UU E22.20 RRQ	54763	2.00	2.20	30	22.0	YES	0.5 - 1.5	+0 / +60	Polyurethane, Black, Rough	Polyurethane, Black, Rough	Polyester fabric	√
UU E22.20 RRQ FG	54555	2.00	2.20	30	22.0	YES	0.5 - 1.5	+0 / +60	Polyurethane, Royal blue, Rough	Polyurethane, Royal blue, Rough	Polyester fabric	√
UU E22.30 RRQ	54764	3.00	3.50	40	22.0	YES	0.5 - 1.5	+0 / +60	Polyurethane, Black, Rough	Polyurethane, Black, Rough	Polyester fabric	√
UU E22.30 RRQ FG	54556	3.00	3.50	40	22.0	YES	0.5 - 1.5	+0 / +60	Polyurethane, Royal blue, Rough	Polyurethane, Royal blue, Rough	Polyester fabric	√

RAPPLON® QuickSplice Flat Belts

• Elastic Process Belts

Technical data RAPPLON® belts

Belt type	Art. No.	Belt Thickness (mm)	Belt Weight (kg/m ²)	Min. pulley diameter mm (20°C)	Belt factor at 1% elongation (N/mm)	Antistatic (AS)	Recommended elongation from/to (%)	Thermal application range (°C)	Cover bottom side (Material, colour, surface structure)	Cover top side (Material, colour, surface structure)	Tension member (Material)	Standard Range Central Stock
Elastic Process Belts												
GG N08 RRQ	54262	1.50	1.40	15	0.8	YES	2.0 - 6.0	+0 / +60	XNBR elastomer, Black, Rough	XNBR elastomer, Green, Rough	Thermoplastic elastomer	√
GG N15 FFQ	54585	1.40	1.40	15	1.5	YES	2.0 - 6.0	+0 / +60	XNBR elastomer, Black, Fine	XNBR elastomer, Black, Fine	Thermoplastic elastomer	√
GG N22 FFQ	54596	1.50	1.40	15	2.2	YES	2.0 - 6.0	+0 / +60	XNBR elastomer, Black, Fine	XNBR elastomer, Green, Fine	Thermoplastic elastomer	
GG N22 RFQ	54263	1.50	1.40	15	2.2	YES	2.0 - 6.0	+0 / +60	XNBR elastomer, Black, Rough	XNBR elastomer, Green, Fine	Thermoplastic elastomer	√
GG N27 RFQ	54608	1.70	1.65	15	2.7	YES	2.0 - 6.0	+0 / +60	XNBR elastomer, Black, Rough	XNBR elastomer, Blue, Fine	Thermoplastic elastomer	√
TT N20 Q	54588	1.25	1.30	20	2.0	NO	2.0 - 6.0	+0 / +60	Polyamide fabric, Green, Fabric texture	Polyamide fabric, Green, Fabric texture	Polyurethane	√
TU N20 FQ	54587	1.25	1.30	20	2.0	NO	2.0 - 6.0	+0 / +60	Polyamide fabric, Green, Fabric texture	Polyurethane, Royal blue, Fine	Polyurethane	√
UU N06 RFQ FG	54532	0.80	0.90	6	0.6	YES	2.0 - 6.0	+0 / +60	Polyurethane, Black, Rough	Polyurethane, Royal blue, Fine	Polyurethane	√
UU N06 RFQ HG	54564	1.10	0.90	15	0.6	YES	2.0 - 6.0	+0 / +60	Polyurethane, Black, Rough	Polyurethane, Royal blue, Fine	Polyurethane	√
UU N06 RFQ HG FG	54550	1.10	0.90	15	0.6	YES	2.0 - 6.0	+0 / +60	Polyurethane, Black, Rough	Polyurethane, Royal blue, Fine	Polyurethane	√
UU N08 RP5Q	54453	1.80	1.90	20	0.8	NO	2.0 - 6.0	+0 / +60	Polyurethane, Royal blue, Rough	Polyurethane, Royal blue, P5 structure	Polyurethane	
UU N08 RSQ FG blue	54563	0.80	0.90	6	0.8	NO	2.0 - 6.0	+0 / +60	Polyurethane, Royal blue, Rough	Polyurethane, Royal blue, Smooth	Polyurethane	√
UU N08 RSQ FG white	54543	0.80	1.00	6	0.8	NO	2.0 - 6.0	+0 / +60	Polyurethane, White, Rough	Polyurethane, White, Smooth	Polyurethane	√
UU N12 RFQ FG	54533	1.15	1.35	15	1.2	YES	2.0 - 6.0	+0 / +60	Polyurethane, Black, Rough	Polyurethane, Royal blue, Fine	Polyurethane	√
UU N12 RRQ FG	54566	1.15	1.35	15	1.2	YES	2.0 - 6.0	+0 / +60	Polyurethane, Black, Rough	Polyurethane, Royal blue, Rough	Polyurethane	
UU N16 RP5Q	54451	1.80	1.90	20	1.6	YES	2.0 - 6.0	+0 / +60	Polyurethane, Royal blue, Rough	Polyurethane, Royal blue, P5 structure	Polyurethane	
UU N16 RSQ FG blue	54540	1.10	1.30	20	1.6	YES	2.0 - 6.0	+0 / +60	Polyurethane, Black, Rough	Polyurethane, Royal blue, Smooth	Polyurethane	√
UU N16 SP5Q FG	54562	1.10	1.30	20	1.6	YES	2.0 - 6.0	+0 / +60	Polyurethane, Black, Smooth	Polyurethane, Royal blue, P5 structure	Polyurethane	√
UU N16 SSQ FG	54551	1.10	1.30	20	1.6	YES	2.0 - 6.0	+0 / +60	Polyurethane, Black, Smooth	Polyurethane, Royal blue, Smooth	Polyurethane	√
UU N17 RFQ FG	54534	1.50	1.80	20	1.7	YES	2.0 - 6.0	+0 / +60	Polyurethane, Black, Rough	Polyurethane, Royal blue, Fine	Polyurethane	√
UU N22 RFQ FG	54535	1.85	2.25	25	2.2	YES	2.0 - 6.0	+0 / +60	Polyurethane, Black, Rough	Polyurethane, Royal blue, Fine	Polyurethane	√
UV N12 FQ	54557	1.50	1.70	20	1.2	YES	0.5 - 1.5	+0 / +60	Polyurethane, Royal blue, Fine	Fleece, Grey, Ground quality	Polyurethane	√



Fabric structure P5

RAPPLON® Classic Flat Belts

• Process Belts

Technical data RAPPLON® belts

Belt type	Art. No.	Belt Thickness (mm)	Belt Weight (kg/m ²)	Min. pulley diameter mm (20°C)	Belt factor at 1% elongation (N/mm)	Antistatic (AS)	Recommended elongation from/to (%)	Thermal application range (°C)	Cover bottom side (Material, colour, surface structure)	Cover top side (Material, colour, surface structure)	Tension member (Material)	Standard Range Central/Stock
Process Belts												
GG S02.11 FFC	54735	1.10	1.20	10	2.0	YES	2.0 - 3.0	+0 / +80	NBR elastomer, Grey, Fine	NBR elastomer, Grey, Fine	Polyamide foil	√
GG S02.11 RRC	54730	1.10	1.20	10	2.0	YES	2.0 - 3.0	+0 / +80	NBR elastomer, Grey, Rough	NBR elastomer, Grey, Rough	Polyamide foil	√
GG S04.14 RRC	54731	1.40	1.50	20	4.0	YES	2.0 - 3.0	+0 / +80	NBR elastomer, Grey, Rough	NBR elastomer, Grey, Rough	Polyamide foil	√
GG S04.30 RRC FG	54783	3.00	3.10	25	4.0	YES	2.0 - 3.0	+0 / +80	XNBR elastomer, Grey, Rough	XNBR elastomer, Grey, Rough	Polyamide foil	√
GG S04.30 RRC	54273	3.10	2.90	30	4.0	YES	2.0 - 3.0	+0 / +80	XNBR elastomer, Green, Rough	XNBR elastomer, Green, Rough	Polyamide foil	√
GG S04.40 RRC FG	54784	4.00	3.10	30	4.0	YES	2.0 - 3.0	+0 / +80	XNBR elastomer, Grey, Rough	XNBR elastomer, Grey, Rough	Polyamide foil	√
GG S04.30 RRC	54164	4.00	4.10	30	4.0	YES	2.0 - 3.0	+0 / +80	XNBR elastomer, Green, Rough	XNBR elastomer, Green, Rough	Polyamide foil	√
GG S06.30 RRC FG	54780	3.00	3.30	30	6.0	YES	2.0 - 3.0	+0 / +80	XNBR elastomer, Grey, Rough	XNBR elastomer, Grey, Rough	Polyamide foil	√
GG S06.30 RRC	54274	3.00	3.30	30	6.0	YES	2.0 - 3.0	+0 / +80	XNBR elastomer, Green, Rough	XNBR elastomer, Green, Rough	Polyamide foil	√
GG S06.40 RRC FG	54781	4.00	4.40	40	6.0	YES	2.0 - 3.0	+0 / +80	XNBR elastomer, Grey, Rough	XNBR elastomer, Grey, Rough	Polyamide foil	√
GG S06.40 RRC	54145	4.00	4.40	40	6.0	YES	2.0 - 3.0	+0 / +80	XNBR elastomer, Green, Rough	XNBR elastomer, Green, Rough	Polyamide foil	√
GG S06.50 RRC	54275	5.00	5.50	50	6.0	YES	2.0 - 3.0	+0 / +80	XNBR elastomer, Green, Rough	XNBR elastomer, Green, Rough	Polyamide foil	√
GG S06.55 RRC FG	54782	5.50	6.00	60	6.0	YES	2.0 - 3.0	+0 / +80	XNBR elastomer, Grey, Rough	XNBR elastomer, Grey, Rough	Polyamide foil	√
GG S06.60 RRC	54276	6.00	6.80	60	6.0	YES	2.0 - 3.0	+0 / +80	XNBR elastomer, Green, Rough	XNBR elastomer, Green, Rough	Polyamide foil	√
GG S06.70 RP6C	54790	7.00	6.50	90	6.0	YES	2.0 - 3.0	+0 / +80	XNBR elastomer, Grey, Rough	NBR elastomer, Light blue, P6 Super grip	Polyamide foil	√
GG S07.30 RRC	54243	3.00	3.40	40	7.0	YES	2.0 - 3.0	+0 / +80	TNBR elastomer, Blue, Rough	TNBR elastomer, Blue, Rough	Polyamide foil	√
GG S09.30 RRC	54736	3.00	3.50	60	9.0	YES	2.0 - 3.0	+0 / +80	TNBR elastomer, Blue, Rough	TNBR elastomer, Blue, Rough	Polyamide foil	√
GG S11.50 RRC	54278	5.00	5.70	60	11.0	YES	2.0 - 3.0	+0 / +80	TNBR elastomer, Blue, Rough	TNBR elastomer, Blue, Rough	Polyamide foil	√
PP S04.14 SSC	54761	1.40	1.60	50	4.0	YES	2.0 - 3.0	+0 / +80	Polyamide foil, Black, Smooth	Polyamide foil, Black, Smooth	Polyamide foil	
S09 C	54504	0.90	1.00	60	9.0	NO	2.0 - 3.0	+0 / +80	Polyamide foil, Transparent, Smooth	Polyamide foil, Transparent, Smooth	Polyamide foil	√
S27 C	58181	2.70	3.40	80	27.0	NO	2.0 - 3.0	+0 / +80	Polyamide foil, Transparent, Smooth	Polyamide foil, Transparent, Smooth	Polyamide foil	
TT S02.10 C	54752	1.00	0.85	10	2.0	YES	2.0 - 3.0	+0 / +80	Polyamide fabric, Blue, Fabric texture	Polyamide fabric, Blue, Fabric texture	Polyamide foil	√
TT S04.12 C	54751	1.20	1.15	20	4.0	NO	2.0 - 3.0	+0 / +80	Polyamide fabric, Blue, Fabric texture	Polyamide fabric, Blue, Fabric texture	Polyamide foil	√
TT S04.12 C black	54251	1.20	1.10	20	4.0	YES	2.0 - 3.0	+0 / +80	Polyamide fabric, Black, Fabric texture	Polyamide fabric, Black, Fabric texture	Polyamide foil	√
TT S09.16 C	54250	1.65	1.65	60	9.0	YES	2.0 - 3.0	+0 / +80	Polyamide fabric, Black, Fabric texture	Polyamide fabric, Black, Fabric texture	Polyamide foil	√
TT S15.23 C	54249	2.30	2.50	90	15.0	YES	2.0 - 3.0	+0 / +80	Polyamide fabric, Black, Fabric texture	Polyamide fabric, Black, Fabric texture	Polyamide foil	

Fabric structure
P6 Supergrip



RAPPLON® Classic Flat Belts

- Process Belts

Technical data RAPPLON® belts

Belt type	Art. No.	Belt Thickness (mm)	Belt Weight (kg/m ²)	Min. pulley diameter mm (20°C)	Belt factor at 1% elongation (N/mm)	Antistatic (AS)	Recommended elongation from/to (%)	Thermal application range (°C)	Cover bottom side (Material, colour, surface structure)	Cover top side (Material, colour, surface structure)	Tension member (Material)	Standard Range Central Stock
-----------	----------	---------------------	----------------------------------	--------------------------------	-------------------------------------	-----------------	------------------------------------	--------------------------------	---	--	---------------------------	------------------------------

Process Belts

GT S04.25 RC	54705	2.40	3.90	40	4.0	YES	2.0 - 3.0	+0 / +80	XNBR elastomer, Green, Rough	Polyamide fabric, Steel blue, Fabric texture	Polyamide foil	
TG E12.50 FC	56421	5.00	5.00	80	11.0	YES	0.2 - 0.6	+0 / +80	Polyester fabric, Black, Fabric texture	Natural rubber, Red, Fine	Polyester fabric	√
TG E12.65 FC	56420	6.50	6.80	80	11.0	YES	0.2 - 0.6	+0 / +80	Polyester fabric, Black, Fabric texture	Natural rubber, Red, Fine	Polyester fabric	√
TG E18.20 P5C	57239	1.90	1.80	60	18.0	YES	0.2 - 0.6	+0 / +80	Polyester fabric, Transparent, Fabric texture	NBR elastomer, Green, P5 structure	Polyester fabric	√
TG P03.12 FC	54525	1.25	1.20	25	3.0	YES	0.2 - 0.6	+0 / +80	Polyamide fabric, Black, Fabric texture	XNBR elastomer, Green, Fine	Polyamide fabric	√
TG P04.20 RC	54265	2.00	2.00	25	3.8	YES	0.2 - 0.6	+0 / +80	Polyamide fabric, Black, Fabric texture	NBR elastomer, Green, Rough	Polyamide fabric	√
TG P07.29 RC	54266	2.90	3.00	50	7.0	YES	0.2 - 0.6	+0 / +80	Polyamide fabric, Black, Fabric texture	NBR elastomer, Green, Rough	Polyamide fabric	√
TG S04.12 RC	54269	1.25	1.25	20	4.0	YES	2.0 - 3.0	+0 / +80	Polyamide fabric, Green, Fabric texture	NBR elastomer, Green, Rough	Polyamide foil	√
TG S04.14 RC	54261	1.40	1.40	20	4.0	YES	2.0 - 3.0	+0 / +80	Polyamide fabric, Green, Fabric texture	XNBR elastomer, Green, Rough	Polyamide foil	√
TG S06.30 RC	54716	3.00	3.10	50	6.0	YES	2.0 - 3.0	+0 / +80	Polyamide fabric, Blue, Fabric texture	TNBR elastomer, Grey, Rough	Polyamide foil	√
TG S09.40 RC	54717	4.00	4.20	60	9.0	YES	2.0 - 3.0	+0 / +80	Polyamide fabric, Blue, Fabric texture	TNBR elastomer, Grey, Rough	Polyamide foil	
TG S09.60 RC	54718	6.10	6.80	80	9.0	YES	2.0 - 3.0	+0 / +80	Polyamide fabric, Blue, Fabric texture	TNBR elastomer, Grey, Rough	Polyamide foil	√



Fabric structure P5

RAPPLON® Tools

Cutting and finger punching equipment



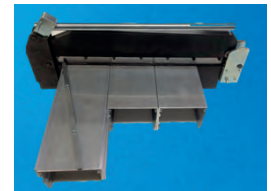
RC 60 Cutter



HFT 120



MFT 60 / MFT 130 / MFT 250



BC-350

Heating pliers



QSP 60 plus



QSP 60LF plus



QSP 105 plus



QSP 160 plus

RAPPLON® Classic Flat Belts

- Drive belts with elastomer cover
- Drive Belts and Tangential Drive Belts
- Spindle tapes

Technical data RAPPLON® belts

Belt type	Art. No.	Belt Thickness (mm)	Belt Weight (kg/m ²)	Min. pulley diameter mm (20°C)	Belt factor at 1% elongation (N/mm)	Antistatic (AS)	Recommended elongation from/to (%)	Thermal application range (°C)	Cover bottom side (Material, colour, surface structure)	Cover top side (Material, colour, surface structure)	Tension member (Material)	Standard Range Central Stock
Drive Belts with elastomer cover												
GT S02 RC	54701	1.10	1.00	10	2.0	YES	2.0 - 3.0	+0 / +80	XNBR elastomer, Grey, Rough	Polyamide fabric, Blue, Fabric texture	Polyamide foil	√
GT S04 RC	54702	1.30	1.30	20	4.0	YES	2.0 - 3.0	+0 / +80	XNBR elastomer, Grey, Rough	Polyamide fabric, Blue, Fabric texture	Polyamide foil	√
GT S06 RC	54703	1.40	1.50	40	6.0	YES	2.0 - 3.0	+0 / +80	XNBR elastomer, Grey, Rough	Polyamide fabric, Blue, Fabric texture	Polyamide foil	√
GT S09 FC	54704	1.90	2.10	40	9.0	YES	2.0 - 3.0	+0 / +80	TNBR elastomer, Blue, Fine	Polyamide fabric, Blue, Fabric texture	Polyamide foil	√
Drive belts and Tangential Drive Belts												
GG S04.17 RFC	54738	1.70	1.90	20	4.0	YES	2.0 - 3.0	+0 / +80	TNBR elastomer, Grey, Rough	TNBR elastomer, Blue, Fine	Polyamide foil	√
GG S06.18 RFC	54734	1.80	1.90	40	6.0	YES	2.0 - 3.0	+0 / +80	TNBR elastomer, Grey, Rough	TNBR elastomer, Blue, Fine	Polyamide foil	√
GG S09.22 RFC	54733	2.20	2.50	60	9.0	YES	2.0 - 3.0	+0 / +80	TNBR elastomer, Grey, Rough	TNBR elastomer, Blue, Fine	Polyamide foil	√
GG S09.22 RFC green	54375	2.20	2.50	60	9.0	YES	2.0 - 3.0	+0 / +80	XNBR elastomer, Green, Rough	XNBR elastomer, Green, Rough	Polyamide foil	
GG S09.22 RRC green	54370	2.20	2.50	60	9.0	YES	2.0 - 3.0	+0 / +80	XNBR elastomer, Green, Rough	XNBR elastomer, Green, Rough	Polyamide foil	√
GG S09.23 RRC green/yellow	54521	2.30	2.50	60	9.0	YES	2.0 - 3.0	+0 / +80	XNBR elastomer, Green, Rough	XNBR elastomer, Yellow, Rough	Polyamide foil	
GG S09.31 RRC green	54740	3.10	3.50	60	9.0	YES	2.0 - 3.0	+0 / +80	XNBR elastomer, Green, Rough	XNBR elastomer, Green, Rough	Polyamide foil	
GG S11.25 RRC green	54528	2.50	2.80	60	11.0	YES	2.0 - 3.0	+0 / +80	XNBR elastomer, Green, Rough	XNBR elastomer, Green, Rough	Polyamide foil	√
GG S11.25 RRC green/yellow	54522	2.50	2.80	60	11.0	YES	2.0 - 3.0	+0 / +80	XNBR elastomer, Green, Rough	XNBR elastomer, Yellow, Rough	Polyamide foil	
GG S11.26 RFC	54530	2.60	3.00	60	11.0	YES	2.0 - 3.0	+0 / +80	TNBR elastomer, Grey, Rough	TNBR elastomer, Blue, Fine	Polyamide foil	√
GG S15.30 RRC	54748	3.00	3.50	80	15.0	YES	2.0 - 3.0	+0 / +80	TNBR elastomer, Grey, Rough	TNBR elastomer, Blue, Rough	Polyamide foil	√
GG S15.30 RRC green	54286	3.10	3.10	80	15.0	YES	2.0 - 3.0	+0 / +80	XNBR elastomer, Green, Rough	XNBR elastomer, Green, Rough	Polyamide foil	√
GG S18.34 RRC green	54287	3.40	3.90	150	18.0	YES	2.0 - 3.0	+0 / +80	XNBR elastomer, Green, Rough	XNBR elastomer, Green, Rough	Polyamide foil	
GG S18.40 RRC	54749	4.00	4.70	160	18.0	YES	2.0 - 3.0	+0 / +80	TNBR elastomer, Grey, Rough	TNBR elastomer, Blue, Rough	Polyamide foil	√
Spindle tapes												
GT P02.05 SC	54980	0.55	0.55	10	1.55	YES	0.5 - 2.0	+0 / +80	NBR elastomer, Green, Smooth	Mixed fabric, Black, Fabric texture	Polyamide fabric	√

RAPPLON® Classic Flat Belts

- Drive Belts with leather cover
- Drive Belts with grooved elastomer cover

Technical data RAPPLON® belts

Belt type	Art. No.	Belt Thickness (mm)	Belt Weight (kg/m ²)	Min. pulley diameter mm (20°C)	Belt factor at 1% elongation (N/mm)	Antistatic (AS)	Recommended elongation from/to (%)	Thermal application range (°C)	Cover bottom side (Material, colour, surface structure)	Cover top side (Material, colour, surface structure)	Tension member (Material)	Standard Range Central Stock
-----------	----------	---------------------	----------------------------------	--------------------------------	-------------------------------------	-----------------	------------------------------------	--------------------------------	---	--	---------------------------	------------------------------

Drive Belts with leather cover

LL S06 C	54038	3.80	3.70	70	6.0	YES	2.0 - 3.0	+0 / +80	Chrome leather, Grey, Ground quality	Chrome leather, Grey, Ground quality	Polyamide foil	√
LL S09 C	54039	4.20	4.00	90	9.0	YES	2.0 - 3.0	+0 / +80	Chrome leather, Grey, Ground quality	Chrome leather, Grey, Ground quality	Polyamide foil	√
LT S06 C	54045	2.60	2.50	50	6.0	YES	2.0 - 3.0	+0 / +80	Chrome leather, Grey, Ground quality	Polyamide fabric, Black, Fabric texture	Polyamide foil	√
LT S09 C	54046	2.90	2.80	70	9.0	YES	2.0 - 3.0	+0 / +80	Chrome leather, Grey, Ground quality	Polyamide fabric, Black, Fabric texture	Polyamide foil	√
LT S11 C	54047	3.00	3.00	100	11.0	YES	2.0 - 3.0	+0 / +80	Chrome leather, Grey, Ground quality	Polyamide fabric, Black, Fabric texture	Polyamide foil	√
LT S15 C	54048	3.60	3.70	150	15.0	YES	2.0 - 3.0	+0 / +80	Chrome leather, Grey, Ground quality	Polyamide fabric, Black, Fabric texture	Polyamide foil	√
LT S18 C	54049	3.90	4.40	200	18.0	YES	2.0 - 3.0	+0 / +80	Chrome leather, Grey, Ground quality	Polyamide fabric, Black, Fabric texture	Polyamide foil	√
LT S27 C	54050	5.10	5.60	350	27.0	YES	2.0 - 3.0	+0 / +80	Chrome leather, Grey, Ground quality	Polyamide fabric, Black, Fabric texture	Polyamide foil	√
LT S36 C	54051	5.90	6.60	400	36.0	YES	2.0 - 3.0	+0 / +80	Chrome leather, Grey, Ground quality	Polyamide fabric, Black, Fabric texture	Polyamide foil	√

Drive Belts with grooved elastomer cover

GG S11 LRC	54289	3.25	3.60	80	11.0	YES	2.0 - 3.0	+0 / +80	NBR elastomer, Black, Longitudinal grooves	NBR elastomer, Green, Rough	Polyamide foil	√
GG S22 LRC	54297	4.60	4.90	220	22.0	YES	2.0 - 3.0	+0 / +80	NBR elastomer, Black, Longitudinal grooves	NBR elastomer, Green, Rough	Polyamide foil	√
GG S33 LRC	54298	5.70	6.20	310	33.0	YES	2.0 - 3.0	+0 / +80	NBR elastomer, Black, Longitudinal grooves	NBR elastomer, Green, Rough	Polyamide foil	√

Notes

Local Contacts

... and 150 more service contact points
at ammeraalbeltech.com

Argentina

T +54 11 4218 2906
info-ar@ammeraalbeltech.com

Australia

T +61 3 8780 6000
info-au@ammeraalbeltech.com

Austria

T +43 171728 133
info-de@ammeraalbeltech.com

Belgium

T +32 2 466 03 00
info-be@ammeraalbeltech.com

Canada

T +1 905 890 1311
info-ca@ammeraalbeltech.com

Chile

T +56 2 233 12900
info-cl@ammeraalbeltech.com

China

T +86 512 8287 2709
info-cn@ammeraalbeltech.com

Colombia

T +57 1 893 9890
info-co@ammeraalbeltech.com

Czech Republic

T +420 567 117 211
info-cz@ammeraalbeltech.com

Denmark

T +45 7572 3100
info-dk@ammeraalbeltech.com

Finland

T +358 207 911 400
info-fi@ammeraalbeltech.com

France

T +33 3 20 90 36 00
info-fr@ammeraalbeltech.com

Germany

T +49 4152 937-0
info-de@ammeraalbeltech.com

Hungary

T +36 30 311 6099
info-hu@ammeraalbeltech.com

India

T +91 44 265 34 244
info-in@ammeraalbeltech.com

Israel

T +972 4 6371485
info-il@ammeraalbeltech.com

Italy

T +39 051 660 60 06
info-it@ammeraalbeltech.com

Japan

T +81 52 433 7400
info-jp@ammeraalbeltech.com

Luxembourg

T +352 26 48 38 56
info-lu@ammeraalbeltech.com

Malaysia

T +60 3 806 188 49
info-my@ammeraalbeltech.com

Mexico

T +52 55 5341 8131
info-mx@ammeraalbeltech.com

Netherlands

T +31 72 57 51212
info-nl@ammeraalbeltech.com

Peru

T +51 1 713 0069
info-pe@ammeraalbeltech.com

Poland

T +48 32 44 77 179
info-pl@ammeraalbeltech.com

Portugal

T +351 22 947 94 40
info-pt@ammeraalbeltech.com

Singapore

T +65 62739767
info-sg@ammeraalbeltech.com

Slovakia

T +421 255648542
info-sk@ammeraalbeltech.com

South Korea

T +82 31 448 3613-7
info-kr@ammeraalbeltech.com

Spain

T +34 93 718 3054
info-es@ammeraalbeltech.com

Sweden

T +46 (0) 10 130 96 00
info-se@ammeraalbeltech.com

Switzerland

T +41 55 2253 535
info-ch@ammeraalbeltech.com

Thailand

T +66 2 902 2604-13
info-th@ammeraalbeltech.com

Turkey

T +90 232 877 0700
info-tr@ammeraalbeltech.com

United Kingdom

T +44 1992 500550
info-uk@ammeraalbeltech.com

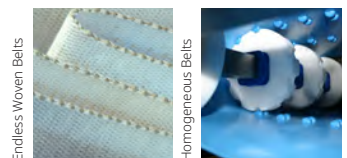
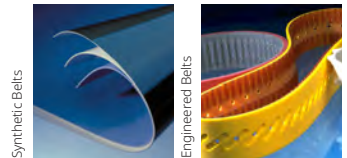
United States

T +1 847 673 6720
info-us@ammeraalbeltech.com

Vietnam

T +84 8 376 562 05
info-vn@ammeraalbeltech.com

**Expert advice, quality solutions
and local service
for all your belting needs**



General contact information:

Ammeraal Beltech
P.O. Box 38
1700 AA Heerhugowaard
The Netherlands

T +31 (0)72 575 1212
info@ammeraalbeltech.com

ammega.com